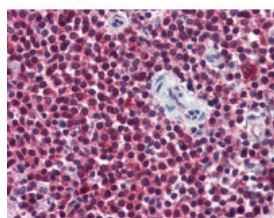




CCT2 Antibody [PK/8/4/4i/2f]

CATALOG NUMBER: 51-830



Immunohistochemistry of human spleen tissue stained using CCT2 Monoclonal Antibody.

Specifications

SPECIES REACTIVITY:	Bovine, Dog, Hamster, Human, Monkey, Mouse, Pig, Rabbit, Rat, Sheep
TESTED APPLICATIONS:	IHC, WB
APPLICATIONS:	CCT2 antibody can be used in ELISA, Western Blot, and immunohistochemistry starting at 5 ug/mL.
USER NOTE:	Optimal dilutions for each application to be determined by the researcher.
SPECIFICITY:	Detects an ~55 kD protein, corresponding to the apparent molecular mass of TCP-1beta on SDS-PAGE immunoblots. This antibody does not react with human Hsp60 nor with E. coli GroEL proteins.
IMMUNOGEN:	Mouse CCT b peptide - PPD conjugate.
HOST SPECIES:	Rat

Properties

PURIFICATION:	Protein G Column
PHYSICAL STATE:	Liquid
BUFFER:	PBS 10 mM sodium phosphate, pH 7.2, 50 mM sodium chloride, 0.1 mM PMSF
STORAGE CONDITIONS:	CT2 antibody can be stored short term 4 °C. For long term storage aliquot and store at -20 °C. As with all antibodies avoid freeze/thaw cycles.
CLONALITY:	Monoclonal
ISOTYPE:	IgG2b
CONJUGATE:	Unconjugated

Additional Info

ALTERNATE NAMES:	CCT2, 99D8.1, CCT-beta, CCTB, PRO1633, TCP-1-beta, TCP1 Beta
ACCESSION NO.:	P78371
PROTEIN GI NO.:	6094436
OFFICIAL SYMBOL:	CCT2
GENE ID:	10576

