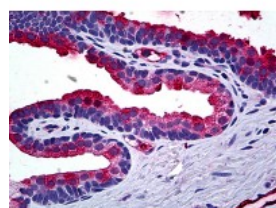




TIMP2 Antibody [1C3]

CATALOG NUMBER: 51-813



Immunohistochemistry of human prostate tissue stained using TIMP2 Monoclonal Antibody.

Specifications

SPECIES REACTIVITY:	Human
TESTED APPLICATIONS:	ELISA, IF, IHC, WB
APPLICATIONS:	TIMP2 antibody can be used in Western Blot, immunohistochemistry starting at 1:50, and immunocytochemistry.
USER NOTE:	Optimal dilutions for each application to be determined by the researcher.
IMMUNOGEN:	Recombinant protein
HOST SPECIES:	Mouse

Properties

PURIFICATION:	Protein A Column
PHYSICAL STATE:	Liquid
BUFFER:	PBS, pH 7.2
STORAGE CONDITIONS:	TIMP2 antibody can be stored short term 4 °C. For long term storage aliquot and store at -20 °C. As with all antibodies avoid freeze/thaw cycles.
CLONALITY:	Monoclonal
ISOTYPE:	IgG2a,k
CONJUGATE:	Unconjugated

Additional Info

ALTERNATE NAMES:	TIMP2, Metalloproteinase inhibitor 2, TIMP-2, CSC-21K
ACCESSION NO.:	P16035
PROTEIN GI NO.:	135854
OFFICIAL SYMBOL:	TIMP2
GENE ID:	7077

Background

