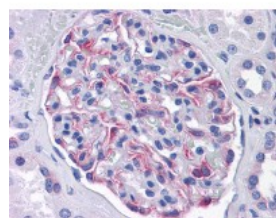




SLC44A2 Antibody [3D11]

CATALOG NUMBER: 51-588



Immunohistochemistry of human kidney
tissue stained using SLC44A2 Monoclonal
Antibody.

Specifications

SPECIES REACTIVITY:	Human
TESTED APPLICATIONS:	ELISA, IHC, WB
APPLICATIONS:	SLC44A2 antibody can be used in Western Blot, immunohistochemistry starting at 15 ug/mL, and immunocytochemistry.
USER NOTE:	Optimal dilutions for each application to be determined by the researcher.
IMMUNOGEN:	CTL2 (AAH40556, 123 a.a. ~ 231 a.a) partial recombinant protein with GST tag. MW of the GST tag alone is 26 KDa.
HOST SPECIES:	Mouse

Properties

PURIFICATION:	Protein A Column
PHYSICAL STATE:	Liquid
BUFFER:	PBS, pH 7.2
STORAGE CONDITIONS:	Store SLC44A2 antibody at -20 °C. Aliquot to avoid freeze/thaw cycles.
CLONALITY:	Monoclonal
ISOTYPE:	IgG1,k
CONJUGATE:	Unconjugated

Additional Info

ALTERNATE NAMES:	SLC44A2, CTL2, PP1292
ACCESSION NO.:	Q8IWA5
PROTEIN GI NO.:	311033462
OFFICIAL SYMBOL:	SLC44A2
GENE ID:	57153

Background

