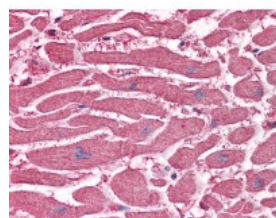




C20orf31 Antibody [2E4]

CATALOG NUMBER: 51-585



Immunohistochemistry of human heart tissue stained using C20orf31 Monoclonal Antibody.

Specifications

SPECIES REACTIVITY:	Human
TESTED APPLICATIONS:	ELISA, IHC, WB
APPLICATIONS:	C20orf31 antibody can be used in Western Blot, immunohistochemistry starting at 1:50, and immunoprecipitation.
USER NOTE:	Optimal dilutions for each application to be determined by the researcher.
IMMUNOGEN:	C20orf31 (NP_060687, 479 a.a. ~ 579 a.a) partial recombinant protein with GST tag. MW of the GST tag alone is 26 KDa.
HOST SPECIES:	Mouse

Properties

PURIFICATION:	Protein A Column
PHYSICAL STATE:	Liquid
BUFFER:	PBS, pH 7.2
STORAGE CONDITIONS:	Store C20orf31 antibody at -20 °C. Aliquot to avoid freeze/thaw cycles.
CLONALITY:	Monoclonal
ISOTYPE:	IgG1,k
CONJUGATE:	Unconjugated

Additional Info

ALTERNATE NAMES:	EDEM2, BA4204.1, C20orf49, C20orf31
ACCESSION NO.:	Q9BV94
PROTEIN GI NO.:	17368685
OFFICIAL SYMBOL:	EDEM2
GENE ID:	55741

Background

