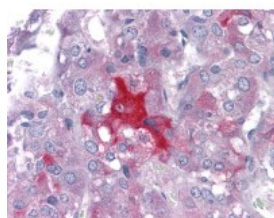




LMTK2 Antibody [3G1]

CATALOG NUMBER: 51-574



Immunohistochemistry of human adrenal tissue stained using LMTK2 Monoclonal Antibody.

Specifications

SPECIES REACTIVITY:	Human
TESTED APPLICATIONS:	ELISA, IHC, WB
APPLICATIONS:	LMTK2 antibody can be used in Western Blot, immunohistochemistry starting at 2.5 ug/mL, immunofluorescence, and flow cytometry.
USER NOTE:	Optimal dilutions for each application to be determined by the researcher.
IMMUNOGEN:	LMTK2 (NP_055731, 1181 a.a. ~ 1280 a.a) partial recombinant protein with GST tag. MW of the GST tag alone is 26 KDa.
HOST SPECIES:	Mouse

Properties

PURIFICATION:	Protein A Column
PHYSICAL STATE:	Liquid
BUFFER:	PBS, pH 7.2
STORAGE CONDITIONS:	Store LMTK2 antibody at -20 °C. Aliquot to avoid freeze/thaw cycles.
CLONALITY:	Monoclonal
ISOTYPE:	IgG2b,k
CONJUGATE:	Unconjugated

Additional Info

ALTERNATE NAMES:	LMTK2, AATYK2, Brain-enriched kinase, Cprk, Kinase phosphatase inhibitor 2, Kinase/phosphatase/inhibitor 2, KPI2, LMR2, HBREK, BREK, CDK5/p35-regulated kinase, KIAA1079, KPI-2, Lemur tyrosine kinase 2
ACCESSION NO.:	Q8IWU2
PROTEIN GI NO.:	145559492
OFFICIAL SYMBOL:	LMTK2
GENE ID:	22853

FOR RESEARCH USE ONLY

December 13, 2016