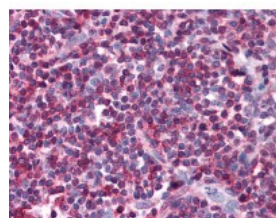




## CD162 Antibody [TC2]

CATALOG NUMBER: 51-571



Immunohistochemistry of human tonsil tissue stained using CD162 Monoclonal Antibody.

### Specifications

<b>SPECIES REACTIVITY:</b>	Human
<b>TESTED APPLICATIONS:</b>	FACS, IHC
<b>APPLICATIONS:</b>	FACS (1.5 - 2.5 ug/ml), IHC-P (10 ug/ml)
<b>USER NOTE:</b>	Optimal dilutions for each application to be determined by the researcher.
<b>HOST SPECIES:</b>	Mouse

### Properties

<b>PURIFICATION:</b>	Protein A Column
<b>PHYSICAL STATE:</b>	Liquid
<b>BUFFER:</b>	PBS, 15 mM sodium azide, pH 7.4
<b>STORAGE CONDITIONS:</b>	CD162 antibody can be stored short term 4 °C. For long term storage aliquot and store at -20 °C. As with all antibodies avoid freeze/thaw cycles.
<b>CLONALITY:</b>	Monoclonal
<b>ISOTYPE:</b>	IgG1
<b>CONJUGATE:</b>	Unconjugated

### Additional Info

<b>ALTERNATE NAMES:</b>	SELPLG, CD162 antigen, CLA, CD162, PSGL1, PSGL-1, Selectin P ligand
<b>ACCESSION NO.:</b>	Q14242
<b>PROTEIN GI NO.:</b>	2498904
<b>OFFICIAL SYMBOL:</b>	SELPLG
<b>GENE ID:</b>	6404

### Background

FOR RESEARCH USE ONLY

