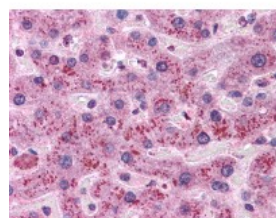




Cyclin D1 Antibody [CD1.1]

CATALOG NUMBER: 51-565



Immunohistochemistry of human liver
tissue stained using Cyclin D1 Monoclonal
Antibody.

Specifications

SPECIES REACTIVITY:	Human, Rat
TESTED APPLICATIONS:	ELISA, FACS, ICC, IHC, IP, WB
APPLICATIONS:	ELISA, FACS, ICC (1 ug/ml), IHC-Fr (2 ug/ml), IHC-P (10 ug/ml), IP, WB (1 ug/ml)
USER NOTE:	Optimal dilutions for each application to be determined by the researcher.
SPECIFICITY:	The antibody CD1.1 recognizes cyclin D1, an ubiquitously expressed 33 kD protein that migrates as a 36 kD band under reducing SDS-PAGE conditions.
IMMUNOGEN:	Purified protein
HOST SPECIES:	Mouse

Properties

PURIFICATION:	Protein A Column
PHYSICAL STATE:	Liquid
BUFFER:	PBS, 15 mM sodium azide, pH 7.4
STORAGE CONDITIONS:	Cyclin D1 antibody can be stored short term 4 °C. For long term storage aliquot and store at -20 °C. As with all antibodies avoid freeze/thaw cycles.
CLONALITY:	Monoclonal
ISOTYPE:	IgG1
CONJUGATE:	Unconjugated

Additional Info

ALTERNATE NAMES:	CCND1, B-cell lymphoma 1 protein, BCL-1 oncogene, B-cell CLL/lymphoma 1, BCL-1, Cyclin D1, G1/S-specific cyclin-D1, U21B31, PRAD1, BCL1, D11S287E, PRAD1 oncogene
ACCESSION NO.:	P24385
PROTEIN GI NO.:	116152
OFFICIAL SYMBOL:	CCND1
GENE ID:	595

