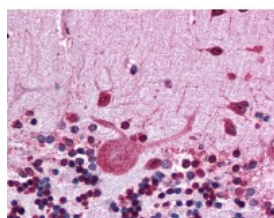




HSP90AB1 Antibody [MBH90B]

CATALOG NUMBER: 51-563



Immunohistochemistry of human cerebellum tissue stained using HSP90AB1 Monoclonal Antibody.

Specifications

SPECIES REACTIVITY:	Bovine, Dog, Goat, Gorilla, Horse, Human, Monkey, Mouse, Orangutan, Pig, Rabbit, Rat, Xenopus
TESTED APPLICATIONS:	ICC, IHC, IP, WB
APPLICATIONS:	ICC (1 ug/ml), IHC-P (5 ug/ml), IP, WB
USER NOTE:	Optimal dilutions for each application to be determined by the researcher.
SPECIFICITY:	The antibody MBH90B recognizes the EEVHHG epitope within the N-terminal part of Hsp90 beta an ubiquitously expressed protein with calculated Mw of 83.3 kD, however, migrating as a 90 kD band under reducing SDS-PAGE conditions.
IMMUNOGEN:	Synthetic peptide
HOST SPECIES:	Mouse

Properties

PURIFICATION:	Protein A Column
PHYSICAL STATE:	Liquid
BUFFER:	15 mM sodium azide, 0.2% BSA, PBS
STORAGE CONDITIONS:	HSP90AB1 antibody can be stored short term 4 °C. For long term storage aliquot and store at -20 °C. As with all antibodies avoid freeze/thaw cycles.
CLONALITY:	Monoclonal
ISOTYPE:	IgG1
CONJUGATE:	Unconjugated

Additional Info

ALTERNATE NAMES:	HSP90AB1, D6S182, Heat shock 84 kDa, Heat shock protein beta, Heat shock protein HSP 90-beta, HSP 84, HSP84, HSP 90, HSP90-BETA, HSP90B, HSPC2, HSPCB
ACCESSION NO.:	P08238
PROTEIN GI NO.:	17865718
OFFICIAL SYMBOL:	HSP90AB1

Background

FOR RESEARCH USE ONLY

December 13, 2016