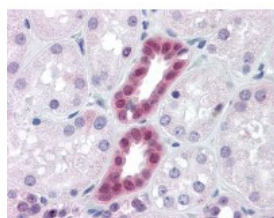




PAX2 Antibody [3C7]

CATALOG NUMBER: 51-494



Immunohistochemistry of human kidney tissue stained using PAX2 Monoclonal Antibody.

Specifications

SPECIES REACTIVITY:	Human
TESTED APPLICATIONS:	ELISA, IHC, WB
APPLICATIONS:	PAX2 antibody can be used in Western Blot, and immunohistochemistry starting at 10 ug/mL.
USER NOTE:	Optimal dilutions for each application to be determined by the researcher.
IMMUNOGEN:	PAX2 (NP_000269, 194 a.a. ~ 304 a.a) partial recombinant protein with GST tag. MW of the GST tag alone is 26 KDa.
HOST SPECIES:	Mouse

Properties

PURIFICATION:	Protein A Column
PHYSICAL STATE:	Liquid
BUFFER:	PBS, pH 7.2
STORAGE CONDITIONS:	Store PAX2 antibody at 4 °C or -20 °C. As with all antibodies avoid freeze/thaw cycles.
CLONALITY:	Monoclonal
ISOTYPE:	IgG2a,k
CONJUGATE:	Unconjugated

Additional Info

ALTERNATE NAMES:	PAX2, Paired box homeotic gene 2, Paired box protein Pax-2, PAPRS, Paired box 2, Paired box gene 2
ACCESSION NO.:	Q02962
PROTEIN GI NO.:	223590261
OFFICIAL SYMBOL:	PAX2
GENE ID:	5076

Background

