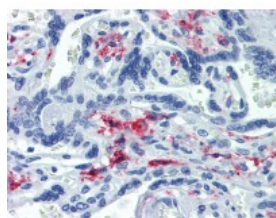




CD163 Antibody [GHI/61]

CATALOG NUMBER: 51-296



Immunohistochemistry of human placenta tissue stained using CD163 Monoclonal Antibody.

Specifications

SPECIES REACTIVITY:	Human
TESTED APPLICATIONS:	FACS, IHC, WB
APPLICATIONS:	CD163 antibody can be used in ELISA, Western Blot, and immunohistochemistry starting at 5 ug/mL.
USER NOTE:	Optimal dilutions for each application to be determined by the researcher.
IMMUNOGEN:	Spleen cells from a case of hairy cell leukemia
HOST SPECIES:	Mouse

Properties

PURIFICATION:	Affinity Purified
PHYSICAL STATE:	Liquid
BUFFER:	PBS, pH 7.2, <=0.09% sodium azide
STORAGE CONDITIONS:	Store CD163 antibody at 4 °C. As with all antibodies avoid freeze/thaw cycles
CLONALITY:	Monoclonal
ISOTYPE:	IgG1,k
CONJUGATE:	Unconjugated

Additional Info

ALTERNATE NAMES:	CD163, CD163 antigen, Macrophage-associated antigen, M130, CD163 molecule, Hemoglobin scavenger receptor, MM130
ACCESSION NO.:	Q86VB7
PROTEIN GI NO.:	313104083
OFFICIAL SYMBOL:	CD163
GENE ID:	9332

Background

