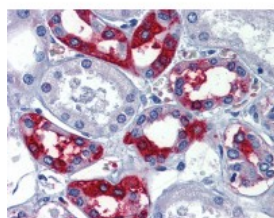




CDw75 Antibody [LN1]

CATALOG NUMBER: 51-287



Immunohistochemistry of human kidney tissue stained using Monoclonal Antibody.

Specifications

SPECIES REACTIVITY:	Human
TESTED APPLICATIONS:	FACS, IF, IHC
APPLICATIONS:	CDw75 antibody can be used in Western Blot starting at 1:100 - 1:1000, and immunohistochemistry starting at 1:50.
USER NOTE:	Optimal dilutions for each application to be determined by the researcher.
IMMUNOGEN:	Nuclei from pokeweed mitogen-stimulated peripheral blood lymphocytes.
HOST SPECIES:	Mouse

Properties

PURIFICATION:	Ammonium Sulfate Precipitation
PHYSICAL STATE:	Liquid
BUFFER:	10mM PBS, pH 7.4, with 0.2% BSA and 0.09% Sodium Azide
STORAGE CONDITIONS:	CDw75 antibody is stable for 24 months when stored at 2-8 °C.
CLONALITY:	Monoclonal
ISOTYPE:	IgM,k
CONJUGATE:	Unconjugated

Additional Info

ALTERNATE NAMES:	SIAT1, Beta-galactoside alpha-2, 6-sialyltransferase 1, B-cell antigen CD75, Alpha 2, 6-ST 1, ST6N, ST6Gal
ACCESSION NO.:	P15907
PROTEIN GI NO.:	115445
OFFICIAL SYMBOL:	ST6GAL1
GENE ID:	6480

Background

FOR RESEARCH USE ONLY

