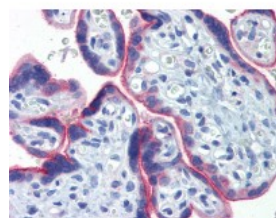




Cyclin B1 Antibody [V63]

CATALOG NUMBER: 51-285



Immunohistochemistry of human placenta tissue stained using Cyclin B1 Monoclonal Antibody.

Specifications

SPECIES REACTIVITY:	Dog, Guinea Pig, Hamster, Human, Mouse, Pig, Rabbit, Rat, Sheep
TESTED APPLICATIONS:	IHC, WB
APPLICATIONS:	Cyclin B1 antibody can be used in ELISA, Western Blot, and immunohistochemistry starting at 5 ug/mL.
USER NOTE:	Optimal dilutions for each application to be determined by the researcher.
SPECIFICITY:	Detects an ~58 kD protein, corresponding to the apparent molecular mass of Cyclin B 1 on SDS-PAGE immunoblots. The epitope of this antibody is within a region spanning the carboxy region. This antibody may cross react with cyclin B2.
IMMUNOGEN:	Hamster cyclin B1 protein.
HOST SPECIES:	Mouse

Properties

PURIFICATION:	Protein G Column
PHYSICAL STATE:	Liquid
BUFFER:	PBS 50% glycerol, 0.09% azide
STORAGE CONDITIONS:	Cyclin B1 antibody can be stored short term 4 °C. For long term storage aliquot and store at -20 °C. As with all antibodies avoid freeze/thaw cycles.
CLONALITY:	Monoclonal
ISOTYPE:	IgG1
CONJUGATE:	Unconjugated

Additional Info

ALTERNATE NAMES:	CCNB1, CCNB, Cyclin B1, G2/mitotic-specific cyclin-B1, G2/mitotic-specific cyclin B1
ACCESSION NO.:	P14635
PROTEIN GI NO.:	116176
OFFICIAL SYMBOL:	CCNB1
GENE ID:	891

