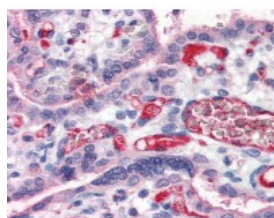




## Fibrinogen Antibody

CATALOG NUMBER: 51-047



Immunohistochemistry staining of Fibrinogen in placenta tissue using Fibrinogen Antibody.

### Specifications

<b>SPECIES REACTIVITY:</b>	Human, Mouse, Rat
<b>TESTED APPLICATIONS:</b>	ELISA, IF, IHC
<b>APPLICATIONS:</b>	Fibrinogen antibody can be used in ELISA, and immunohistochemistry starting at 5 ug/mL.
<b>USER NOTE:</b>	Optimal dilutions for each application to be determined by the researcher.
<b>IMMUNOGEN:</b>	Fibrinogen antibody was raised against human Fibrinogen purified from plasma (Human).
<b>HOST SPECIES:</b>	Sheep

### Properties

<b>PURIFICATION:</b>	Protein G Column
<b>PHYSICAL STATE:</b>	Liquid
<b>BUFFER:</b>	PBS, pH 7.4, 0.09% sodium azide.
<b>STORAGE CONDITIONS:</b>	Store Fibrinogen antibody at 4 °C or -20 °C. As with all antibodies avoid freeze/thaw cycles. <b>Store undiluted.</b>
<b>CLONALITY:</b>	Polyclonal
<b>ISOTYPE:</b>	IgG
<b>CONJUGATE:</b>	Unconjugated

### Additional Info

<b>ALTERNATE NAMES:</b>	Fibrinogen alpha chainFib2
<b>ACCESSION NO.:</b>	P02671
<b>PROTEIN GI NO.:</b>	1706799
<b>OFFICIAL SYMBOL:</b>	FGA
<b>GENE ID:</b>	2243

### Background

<b>BACKGROUND:</b>	Recognises human fibrinogen, a 340kD glycoprotein which plays an important role in the coagulation process. This antibody shows minimal cross-reactivity with related serum proteins.
--------------------	---

