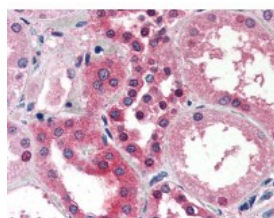




## SMAD3 Antibody [AF9F7]

CATALOG NUMBER: 51-041



Immunohistochemistry staining of SMAD3 in kidney tissue using SMAD3 monoclonal Antibody.

### Specifications

<b>SPECIES REACTIVITY:</b>	Human, Mouse, Rat
<b>TESTED APPLICATIONS:</b>	ELISA, IHC, IP, WB
<b>APPLICATIONS:</b>	SMAD3 antibody can be used in immunohistochemistry starting at 10 ug/mL.
<b>USER NOTE:</b>	Optimal dilutions for each application to be determined by the researcher.
<b>IMMUNOGEN:</b>	SMAD3 monoclonal antibody was raised against recombinant human His - SMAD3 protein purified from E. coli (Human).
<b>HOST SPECIES:</b>	Mouse

### Properties

<b>PURIFICATION:</b>	Purified
<b>PHYSICAL STATE:</b>	Liquid
<b>BUFFER:</b>	HEPES with 0.15M NaCl, 0.01% BSA, 0.03% sodium azide, and 50% glycerol
<b>STORAGE CONDITIONS:</b>	Store SMAD3 antibody at 4 °C or -20 °C. As with all antibodies avoid freeze/thaw cycles.
<b>CLONALITY:</b>	Monoclonal
<b>ISOTYPE:</b>	IgG1,k
<b>CONJUGATE:</b>	Unconjugated

### Additional Info

<b>ALTERNATE NAMES:</b>	SMAD3, HSPC193, HMAD-3, HsT17436, LDS1C, LDS3, Mad homolog JV15-2, MAD3, MADH3, Mothers against DPP homolog 3, JV15-2, SMA- and MAD-related protein 3, SMAD family member 3, MAD homolog 3, HSMAD3, Mad protein homolog, SMAD 3
<b>ACCESSION NO.:</b>	P84022
<b>PROTEIN GI NO.:</b>	51338669
<b>OFFICIAL SYMBOL:</b>	SMAD3
<b>GENE ID:</b>	4088

FOR RESEARCH USE ONLY

December 13, 2016