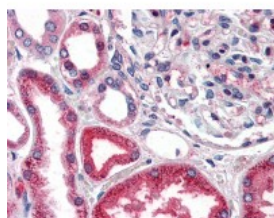




Catalase Antibody, Monoclonal

CATALOG NUMBER: 51-040



Immunohistochemistry staining of
Catalase in kidney tissue using Catalase
monoclonal Antibody.

Specifications

SPECIES REACTIVITY:	Human, Mouse, Rat
TESTED APPLICATIONS:	IHC, WB
APPLICATIONS:	Catalase antibody can be used in ELISA starting at 1:1000, Western Blot starting at 1:2000, and immunohistochemistry starting at 10 ug/mL.
USER NOTE:	Optimal dilutions for each application to be determined by the researcher.
IMMUNOGEN:	Catalase monoclonal antibody was raised against recombinant human catalase purified from E. coli (Human)
HOST SPECIES:	Mouse

Properties

PURIFICATION:	Purified
PHYSICAL STATE:	Liquid
BUFFER:	HEPES with 0.15M NaCl, 0.01% BSA, 0.03% sodium azide, and 50% glycerol
STORAGE CONDITIONS:	Store Catalase antibody at 4 °C or -20 °C. As with all antibodies avoid freeze/thaw cycles.
CLONALITY:	Monoclonal
ISOTYPE:	IgG2a,k
CONJUGATE:	Unconjugated

Additional Info

ALTERNATE NAMES:	CAT, Catalase
ACCESSION NO.:	P04040
PROTEIN GI NO.:	115702
OFFICIAL SYMBOL:	CAT
GENE ID:	847

Background

