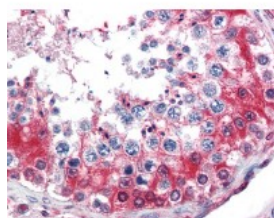




## GAPDH Antibody

CATALOG NUMBER: 51-033



Immunohistochemistry staining of GAPDH  
in testis tissue using GAPDH Antibody.

### Specifications

<b>SPECIES REACTIVITY:</b>	Gibbon, Gorilla, Human, Monkey, Orangutan
<b>TESTED APPLICATIONS:</b>	IHC, WB
<b>APPLICATIONS:</b>	GAPDH antibody can be used in ELISA, Western Blot starting at 1:500 - 1:1000, immunohistochemistry starting at 5 ug/mL, and immunofluorescence starting at 10 ug/mL.
<b>USER NOTE:</b>	Optimal dilutions for each application to be determined by the researcher.
<b>IMMUNOGEN:</b>	GAPDH antibody was raised against amino acids 73 - 87 of GAPDH (Human).
<b>HOST SPECIES:</b>	Rabbit

### Properties

<b>PURIFICATION:</b>	Protein G Column
<b>PHYSICAL STATE:</b>	Liquid
<b>BUFFER:</b>	PBS, 0.05% BSA, 0.05% sodium azide.
<b>STORAGE CONDITIONS:</b>	GAPDH antibody should be stored long term (months) at -20 °C and short term (weeks) at 4 °C. As with all antibodies avoid freeze/thaw cycles.
<b>CLONALITY:</b>	Polyclonal
<b>CONJUGATE:</b>	Unconjugated

### Additional Info

<b>ALTERNATE NAMES:</b>	GAPDH, A1 40 kd subunit, Activator 1 40 kd subunit, G3PD, GAPD, G3pdh, Rfc40, Rf-c 40 kd subunit
<b>ACCESSION NO.:</b>	P04406
<b>PROTEIN GI NO.:</b>	120649
<b>OFFICIAL SYMBOL:</b>	GAPDH
<b>GENE ID:</b>	2597

### Background

FOR RESEARCH USE ONLY

