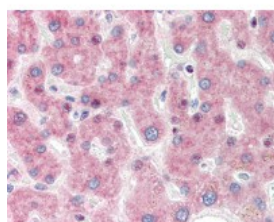




## IRF3 Antibody

CATALOG NUMBER: 51-031



Immunohistochemistry staining of IRF3 in liver tissue using IRF3 Antibody.

### Specifications

<b>SPECIES REACTIVITY:</b>	Human, Monkey
<b>TESTED APPLICATIONS:</b>	IHC, WB
<b>APPLICATIONS:</b>	IRF3 antibody can be used in ELISA, Western Blot starting at 1:500 - 1:1000, and immunohistochemistry starting at 5 ug/mL.
<b>USER NOTE:</b>	Optimal dilutions for each application to be determined by the researcher.
<b>IMMUNOGEN:</b>	IRF3 antibody was raised against a synthetic peptide (KLH - coupled) corresponding to a region around residue 300 of IRF3 (Human).
<b>HOST SPECIES:</b>	Rabbit

### Properties

<b>PURIFICATION:</b>	Immunoaffinity Chromatography
<b>PHYSICAL STATE:</b>	Liquid
<b>BUFFER:</b>	10 mM sodium HEPES, pH 7.5, 150 mM sodium chloride, 0.1 mg/mL BSA, 50% glycerol.
<b>STORAGE CONDITIONS:</b>	IRF3 antibody should be stored long term (months) at -20 °C and short term (weeks) at 4 °C. As with all antibodies avoid freeze/thaw cycles.
<b>CLONALITY:</b>	Polyclonal
<b>ISOTYPE:</b>	IgG
<b>CONJUGATE:</b>	Unconjugated

### Additional Info

<b>ALTERNATE NAMES:</b>	IRF3, Interferon regulatory factor 3, IRF-3
<b>ACCESSION NO.:</b>	Q14653
<b>PROTEIN GI NO.:</b>	2497442
<b>OFFICIAL SYMBOL:</b>	IRF3
<b>GENE ID:</b>	3661

### Background

**BACKGROUND:**

Interferon regulatory factor 3 (IRF3) is a transcription factor activated in response to various environmental stresses including viral infection and DNA-damaging agents. IRF3 can inhibit cell growth and plays a critical role in controlling the expression of genes in the innate immune response. In unstimulated cells, IRF3 is present in the cytoplasm. Viral infection results in phosphorylation of IRF3, leading to its translocation to the nucleus, where it activates promoters. Suitable for use in Western Blot and Immunohistochemistry (FFPE). Other applications not tested. Detects endogenous levels of human IRF3 at 57kD. Species Crossreactivity: monkey.

---

**FOR RESEARCH USE ONLY**

December 13, 2016