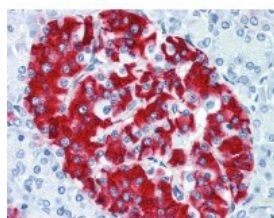




Insulin Antibody

CATALOG NUMBER: 51-029



Immunohistochemistry staining of Insulin in pancreas tissue using Insulin Antibody.

Specifications

SPECIES REACTIVITY:	Human, Mouse, Rat
TESTED APPLICATIONS:	ELISA, FACS, ICC, IF, IHC
APPLICATIONS:	Insulin antibody can be used in immunohistochemistry starting at 10 - 20 ug/mL.
USER NOTE:	Optimal dilutions for each application to be determined by the researcher.
IMMUNOGEN:	Insulin antibody was raised against a synthetic peptide (KLH - coupled) derived from the sequence of human insulin (Human).
HOST SPECIES:	Rabbit

Properties

PURIFICATION:	Immunoaffinity Chromatography
PHYSICAL STATE:	Liquid
BUFFER:	10 mM HEPES, pH 7.5, 150 mM sodium chloride, 100 ug/ml BSA, 50% glycerol.
CONCENTRATION:	0.02 mg/ml
STORAGE CONDITIONS:	Store Insulin antibody at 4 °C or -20 °C. As with all antibodies avoid freeze/thaw cycles.
CLONALITY:	Polyclonal
ISOTYPE:	IgG
CONJUGATE:	Unconjugated

Additional Info

ALTERNATE NAMES:	INS, IRDN, IDDM2, Preproinsulin, ILPR, Insulin, MODY10, Proinsulin
ACCESSION NO.:	P01308
PROTEIN GI NO.:	124617
OFFICIAL SYMBOL:	INS
GENE ID:	3630

Background

