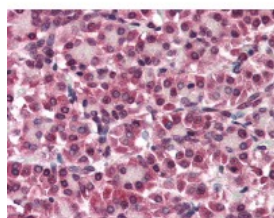




Glypican 4 Antibody

CATALOG NUMBER: 49-984



Immunohistochemistry staining of
Glypican 4 in pancreas tissue using
Glypican 4 Antibody.

Specifications

SPECIES REACTIVITY:	Bat, Gibbon, Gorilla, Hamster, Human, Mouse, Rat
TESTED APPLICATIONS:	IHC
APPLICATIONS:	Glypican 4 antibody can be used in ELISA, immunohistochemistry starting at 5 ug/mL, and immunofluorescence starting at 10 ug/mL.
USER NOTE:	Optimal dilutions for each application to be determined by the researcher.
SPECIFICITY:	BLAST analysis of the peptide immunogen showed no homology with other human proteins.
IMMUNOGEN:	Glypican 4 antibody was raised against synthetic peptide corresponding to an internal domain of human Glypican 4 (Human).
HOST SPECIES:	Rabbit

Properties

PURIFICATION:	Immunoaffinity Chromatography
PHYSICAL STATE:	Liquid
BUFFER:	PBS, 0.1% sodium azide.
STORAGE CONDITIONS:	Glypican 4 antibody should be stored long term (months) at -80 °C and short term (days) at 4 °C. As with all antibodies avoid freeze/thaw cycles.
CLONALITY:	Polyclonal
CONJUGATE:	Unconjugated

Additional Info

ALTERNATE NAMES:	GPC4, DJ900E8.1 (glypican 4), Glypican 4, Glypican proteoglycan 4, Glypican-4, K-glypican
ACCESSION NO.:	O75487
PROTEIN GI NO.:	30923161
OFFICIAL SYMBOL:	GPC4
GENE ID:	2239

FOR RESEARCH USE ONLY

December 13, 2016