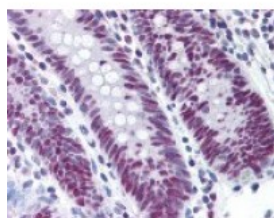


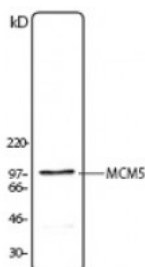


MCM5 Antibody

CATALOG NUMBER: 49-978



Immunohistochemistry staining of MCM5 in colon tissue using MCM5 Antibody.



Western blot analysis of MCM5 in jurkat cell nuclear extract using MCM5 Antibody.

Specifications

SPECIES REACTIVITY:	Bat, Gibbon, Gorilla, Horse, Human, Monkey, Mouse
TESTED APPLICATIONS:	IHC, WB
APPLICATIONS:	MCM5 antibody can be used in ELISA, Western Blot starting at 1:1000 - 1:2000, and immunohistochemistry starting at 5 ug/mL.
USER NOTE:	Optimal dilutions for each application to be determined by the researcher.
IMMUNOGEN:	MCM5 antibody was raised against a synthetic peptide of MCM5 (Mouse).
HOST SPECIES:	Rabbit

Properties

PURIFICATION:	Immunoaffinity Chromatography
PHYSICAL STATE:	Liquid
BUFFER:	Phosphate-buffered solution, pH 7.2, 0.09% sodium azide, 50% glycerol.
STORAGE CONDITIONS:	Store MCM5 antibody at -20 °C. Aliquot to avoid freeze/thaw cycles.
CLONALITY:	Polyclonal
ISOTYPE:	IgG
CONJUGATE:	Unconjugated

Additional Info

ALTERNATE NAMES:	MCM5, CDC46, CDC46 homolog, p1-CDC46
ACCESSION NO.:	P33992
PROTEIN GI NO.:	19858646
OFFICIAL SYMBOL:	MCM5
GENE ID:	4174

Background

FOR RESEARCH USE ONLY

