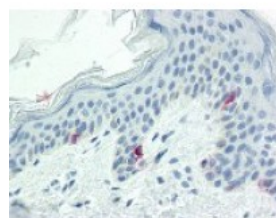




Tyrosinase Antibody [T311]

CATALOG NUMBER: 49-952



Immunohistochemistry staining of
Tyrosinase in skin tissue using Tyrosinase
Monoclonal Antibody.

Specifications

SPECIES REACTIVITY:	Cat, Dog, Human
TESTED APPLICATIONS:	ELISA, ICC, IF, IHC, WB
APPLICATIONS:	Tyrosinase antibody can be used in immunohistochemistry starting at 2.5 ug/mL.
USER NOTE:	Optimal dilutions for each application to be determined by the researcher.
SPECIFICITY:	Recognizes a cluster of proteins between 70-80kD, identified as human tyrosinase. Occasionally a minor band at 55kD is also detected.
IMMUNOGEN:	Tyrosinase monoclonal antibody was raised against recombinant Tyrosinase (Human).
HOST SPECIES:	Mouse

Properties

PURIFICATION:	Protein A Column
PHYSICAL STATE:	Liquid
BUFFER:	PBS, pH 7.4, 0.2% BSA, 0.09% sodium azide.
STORAGE CONDITIONS:	Store Tyrosinase antibody at 4 °C or -20 °C. As with all antibodies avoid freeze/thaw cycles.
CLONALITY:	Monoclonal
ISOTYPE:	IgG2a
CONJUGATE:	Unconjugated

Additional Info

ALTERNATE NAMES:	TYR, CMM8, LB24-AB, SHEP3, SK29-AB, Monophenol monooxygenase, Tumor rejection antigen AB, OCA1A, Tyrosinase, OCAIA
ACCESSION NO.:	P14679
PROTEIN GI NO.:	401235
OFFICIAL SYMBOL:	TYR
GENE ID:	7299

Background

BACKGROUND: Tyrosinase is a copper containing oxidase that catalyzes the first step in the conversion of tyrosine to melanin, and other polyphenolic compounds. It also catalyzes the rate-limiting conversion of tyrosine to DOPA. Mutations in tyrosinase are the cause of oculocutaneous albinism 1A.

FOR RESEARCH USE ONLY

December 13, 2016