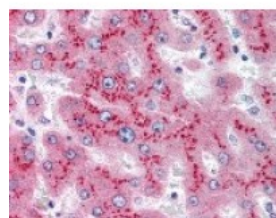




SAA1 Antibody, Monoclonal

CATALOG NUMBER: 49-762



Immunohistochemistry staining of SAA1 in liver: formalin-fixed paraffin-embedded (ffpe) SAA1 Monoclonal Antibody.

Specifications

SPECIES REACTIVITY:	Human
TESTED APPLICATIONS:	ELISA, IHC, WB
APPLICATIONS:	SAA1 antibody can be used in Western Blot, and immunohistochemistry starting at 5 ug/mL.
USER NOTE:	Optimal dilutions for each application to be determined by the researcher.
SPECIFICITY:	Recognizes natural and recombinant human SAA.
IMMUNOGEN:	SAA1 monoclonal antibody was raised against recombinant (12kD) SAA1 (Human).
HOST SPECIES:	Mouse

Properties

PURIFICATION:	Protein G Column
PHYSICAL STATE:	Liquid
BUFFER:	PBS, pH 7.2, 40% glycerol.
STORAGE CONDITIONS:	SAA1 antibody should be stored long term (months) at -20 °C and short term (weeks) at 4 °C. As with all antibodies avoid freeze/thaw cycles.
CLONALITY:	Monoclonal
ISOTYPE:	IgG1,k
CONJUGATE:	Unconjugated

Additional Info

ALTERNATE NAMES:	SAA1, Serum amyloid A protein, Serum Amyloid A, Serum amyloid A-1 protein, TP53I4, SAA, Serum amyloid A1, PIG4
ACCESSION NO.:	P02735
PROTEIN GI NO.:	134167
OFFICIAL SYMBOL:	SAA1
GENE ID:	6288

Background

BACKGROUND: Recognizes natural and recombinant human SAA. Does not show any crossreactivity with other human cytokines or growth factors tested such as IL-1b, IL-8, MCAF, TGF-b and EGF.

FOR RESEARCH USE ONLY

December 13, 2016