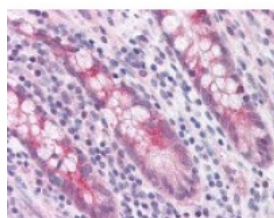




WISP3 Antibody

CATALOG NUMBER: 49-748



Immunohistochemistry staining of WISP3
in small intestine tissue using WISP3
Antibody.

Specifications

SPECIES REACTIVITY:	Human
TESTED APPLICATIONS:	ELISA, IHC
APPLICATIONS:	WISP3 antibody can be used in ELISA starting at 1:10000 - 1:50000, Western Blot starting at 1:1000 - 1:10000, and immunohistochemistry starting at 10 ug/mL.
USER NOTE:	Optimal dilutions for each application to be determined by the researcher.
IMMUNOGEN:	Amino acids 320 to 335 of human WISP3
HOST SPECIES:	Rabbit

Properties

PURIFICATION:	Protein G Column
PHYSICAL STATE:	Liquid
BUFFER:	PBS, 0.1% sodium azide.
STORAGE CONDITIONS:	WISP3 antibody should be stored long term (months) at -20 °C and short term (weeks) at 4 °C. As with all antibodies avoid freeze/thaw cycles.
CLONALITY:	Polyclonal
CONJUGATE:	Unconjugated

Additional Info

ALTERNATE NAMES:	WISP3, CCN family member 6, CCN6, PPD, LIBC, PPAC, WISP-3
ACCESSION NO.:	O95389
PROTEIN GI NO.:	34098394
OFFICIAL SYMBOL:	WISP3
GENE ID:	8838

Background

FOR RESEARCH USE ONLY

