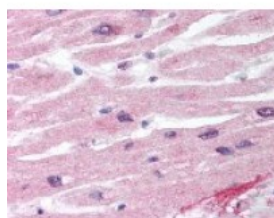




WISP1 Antibody

CATALOG NUMBER: 49-746



Immunohistochemistry staining of WISP1
in heart tissue using WISP1 Antibody.

Specifications

SPECIES REACTIVITY:	Human
TESTED APPLICATIONS:	ELISA, IHC
APPLICATIONS:	WISP1 antibody can be used in ELISA starting at 1:10000 - 1:50000, Western Blot starting at 1:1000 - 1:10000, immunohistochemistry starting at 1:500, and immunoprecipitation
USER NOTE:	Optimal dilutions for each application to be determined by the researcher.
IMMUNOGEN:	Amino acids 185 to 200 of human WISP1
HOST SPECIES:	Rabbit

Properties

PURIFICATION:	Protein G Column
PHYSICAL STATE:	Liquid
BUFFER:	PBS, 0.1% sodium azide.
STORAGE CONDITIONS:	WISP1 antibody should be stored long term (months) at -20 °C and short term (weeks) at 4 °C. As with all antibodies avoid freeze/thaw cycles.
CLONALITY:	Polyclonal
CONJUGATE:	Unconjugated

Additional Info

ALTERNATE NAMES:	WISP1, CCN4, WISP1i, WISP1tc, Wnt-1-induced secreted protein, WISP-1, WISP1c, CCN family member 4
ACCESSION NO.:	O95388
PROTEIN GI NO.:	34098393
OFFICIAL SYMBOL:	WISP1
GENE ID:	8840

Background

FOR RESEARCH USE ONLY

