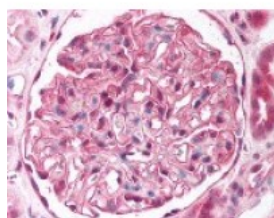




ST7 Antibody

CATALOG NUMBER: 49-736



Immunohistochemistry staining of ST7 in kidney (formalin-fixed paraffin embedded) tissue using ST7 Antibody.

Specifications

SPECIES REACTIVITY:	Human
TESTED APPLICATIONS:	ELISA, IHC
APPLICATIONS:	ST7 antibody can be used in Western Blot, and immunohistochemistry starting at 20 ug/mL.
USER NOTE:	Optimal dilutions for each application to be determined by the researcher.
IMMUNOGEN:	Amino acids 846 to 859 of human ST7
HOST SPECIES:	Rabbit

Properties

PURIFICATION:	Protein G Column
PHYSICAL STATE:	Liquid
BUFFER:	PBS, 0.1% sodium azide.
STORAGE CONDITIONS:	ST7 antibody should be stored long term (months) at -20 °C and short term (weeks) at 4 °C. As with all antibodies avoid freeze/thaw cycles.
CLONALITY:	Polyclonal
CONJUGATE:	Unconjugated

Additional Info

ALTERNATE NAMES:	ST7, ETS7q, FAM4A, HELG, Protein FAM4A1, RAY1, SEN4, TSG7, FAM4A1, Protein HELG
ACCESSION NO.:	Q9NRC1
PROTEIN GI NO.:	74734319
OFFICIAL SYMBOL:	ST7
GENE ID:	7982

Background

FOR RESEARCH USE ONLY

