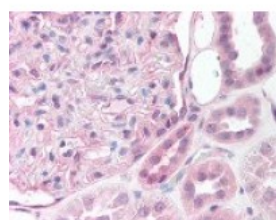




## ST14 Antibody

CATALOG NUMBER: 49-734



Immunohistochemistry staining of ST14 in kidney (formalin-fixed paraffin embedded) tissue using ST14 Antibody.

### Specifications

<b>SPECIES REACTIVITY:</b>	Human
<b>TESTED APPLICATIONS:</b>	ELISA, IHC
<b>APPLICATIONS:</b>	ST14 antibody can be used in ELISA starting at 1:5000 - 1:25000, Western Blot starting at 1:500 - 1:2000, and immunohistochemistry starting at 1:200.
<b>USER NOTE:</b>	Optimal dilutions for each application to be determined by the researcher.
<b>IMMUNOGEN:</b>	Amino acids 840 to 854 of human ST14
<b>HOST SPECIES:</b>	Rabbit

### Properties

<b>PURIFICATION:</b>	Protein G Column
<b>PHYSICAL STATE:</b>	Liquid
<b>BUFFER:</b>	PBS, 0.1% sodium azide.
<b>STORAGE CONDITIONS:</b>	ST14 antibody should be stored long term (months) at -20 °C and short term (weeks) at 4 °C. As with all antibodies avoid freeze/thaw cycles.
<b>CLONALITY:</b>	Polyclonal
<b>CONJUGATE:</b>	Unconjugated

### Additional Info

<b>ALTERNATE NAMES:</b>	ST14, Epithin, HAI, Prostamin, PRSS14, TADG15, Matriptase, MT-SP1, SNC19, TMPRSS14, MTSP1, Serine protease 14, Serine protease TADG-15, TADG-15
<b>ACCESSION NO.:</b>	Q9Y5Y6
<b>PROTEIN GI NO.:</b>	13124575
<b>OFFICIAL SYMBOL:</b>	ST14
<b>GENE ID:</b>	6768

### Background

