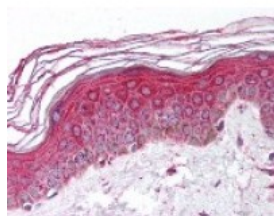




PTPRR Antibody

CATALOG NUMBER: 49-724



Immunohistochemistry staining of PTPRR
in skin (formalin-fixed paraffin embedded)
tissue using PTPRR Antibody.

Specifications

SPECIES REACTIVITY:	Human
TESTED APPLICATIONS:	ELISA, IHC
APPLICATIONS:	PTPRR antibody can be used in ELISA starting at 1:000 - 1:1000, and immunohistochemistry starting at 5 ug/mL.
USER NOTE:	Optimal dilutions for each application to be determined by the researcher.
IMMUNOGEN:	Amino acids 249 to 265 of human PTPRR
HOST SPECIES:	Rabbit

Properties

PURIFICATION:	Protein G Column
PHYSICAL STATE:	Liquid
BUFFER:	PBS, 0.1% sodium azide.
STORAGE CONDITIONS:	PTPRR antibody should be stored long term (months) at -20 °C and short term (weeks) at 4 °C. As with all antibodies avoid freeze/thaw cycles.
CLONALITY:	Polyclonal
CONJUGATE:	Unconjugated

Additional Info

ALTERNATE NAMES:	PTPRR, Ch-1 PTPase, Ch-1PTPase, EC-PTP, ECPTP, PTP-SL, NC-PTPCOM1, PC12-PTP1, PCPTP1, R-PTP-R
ACCESSION NO.:	Q15256
PROTEIN GI NO.:	134039192
OFFICIAL SYMBOL:	PTPRR
GENE ID:	5801

Background

BACKGROUND: PTP r, a R7 receptor protein tyrosine phosphatase, has been shown to regulate activation and translocation of

the extracellular signal-regulated kinases ERK1, ERK2, and ERK5 through a kinase interaction motif located in the N terminus of the PTP r. PTP r also downregulates ERK5 activity and effectively impedes the translocation of ERK5 to the nucleus. In mouse, two protein isoforms (PTP-SL and PTPBR7) are encoded by the same gene through developmentally regulated use of alternative promoters. In rats, two alternatively spliced isoforms that differ in their 5' untranslated regions have been documented and they show overlapping but different expression patterns in the brain.

FOR RESEARCH USE ONLY

December 13, 2016