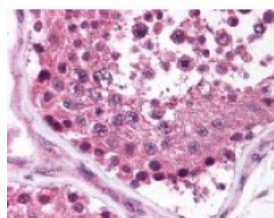




MAGEF1 Antibody

CATALOG NUMBER: 49-722



Immunohistochemistry staining of MAGEF1 in testis (formalin-fixed paraffin embedded) tissue using MAGEF1 Antibody.

Specifications

SPECIES REACTIVITY:	Human
TESTED APPLICATIONS:	ELISA, IHC
APPLICATIONS:	MAGEF1 antibody can be used in ELISA starting at 1:000 - 1:1000, and immunohistochemistry starting at 5 - 10 ug/mL.
USER NOTE:	Optimal dilutions for each application to be determined by the researcher.
IMMUNOGEN:	Amino acids 288 to 302 of human MAGEF1
HOST SPECIES:	Rabbit

Properties

PURIFICATION:	Protein G Column
PHYSICAL STATE:	Liquid
BUFFER:	PBS, 0.1% sodium azide.
STORAGE CONDITIONS:	MAGEF1 antibody should be stored long term (months) at -20 °C and short term (weeks) at 4 °C. As with all antibodies avoid freeze/thaw cycles.
CLONALITY:	Polyclonal
CONJUGATE:	Unconjugated

Additional Info

ALTERNATE NAMES:	MAGEF1, Melanoma-associated antigen F1, MAGE-F1 antigen, Melanoma antigen family F, 1
ACCESSION NO.:	Q9HAY2
PROTEIN GI NO.:	300669649
OFFICIAL SYMBOL:	MAGEF1
GENE ID:	64110

Background

