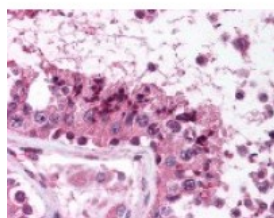




## MAGEC1 Antibody

CATALOG NUMBER: 49-721



Immunohistochemistry staining of MAGEC1 in testis (formalin-fixed paraffin embedded) tissue using MAGEC1 Antibody.

### Specifications

<b>SPECIES REACTIVITY:</b>	Human
<b>TESTED APPLICATIONS:</b>	ELISA, IHC
<b>APPLICATIONS:</b>	MAGEC1 antibody can be used in ELISA starting at 1:000 - 1:1000, and immunohistochemistry starting at 10 - 20 ug/mL.
<b>USER NOTE:</b>	Optimal dilutions for each application to be determined by the researcher.
<b>IMMUNOGEN:</b>	Amino acids 864 to 880 of human MAGEC1
<b>HOST SPECIES:</b>	Rabbit

### Properties

<b>PURIFICATION:</b>	Protein G Column
<b>PHYSICAL STATE:</b>	Liquid
<b>BUFFER:</b>	PBS, 0.1% sodium azide.
<b>STORAGE CONDITIONS:</b>	MAGEC1 antibody should be stored long term (months) at -20 °C and short term (weeks) at 4 °C. As with all antibodies avoid freeze/thaw cycles.
<b>CLONALITY:</b>	Polyclonal
<b>CONJUGATE:</b>	Unconjugated

### Additional Info

<b>ALTERNATE NAMES:</b>	MAGEC1, CT7.1, Cancer/testis antigen 7.1, CT7, MAGE-C1, Melanoma antigen family C, 1, MAGE-C1 antigen, Melanoma-associated antigen C1
<b>ACCESSION NO.:</b>	O60732
<b>PROTEIN GI NO.:</b>	109940095
<b>OFFICIAL SYMBOL:</b>	MAGEC1
<b>GENE ID:</b>	9947

### Background

