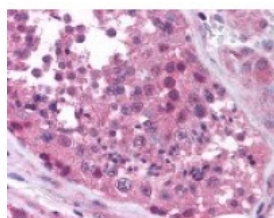




MAGEA4 Antibody

CATALOG NUMBER: 49-714



Immunohistochemistry staining of MAGEA4 in testis (formalin-fixed paraffin embedded) tissue using MAGEA4 Antibody.

Specifications

SPECIES REACTIVITY:	Human
TESTED APPLICATIONS:	ELISA, IHC
APPLICATIONS:	MAGEA4 antibody can be used in ELISA starting at 1:5000 - 1:20000, Western Blot starting at 1:500 - 1:3000, and immunohistochemistry starting at 2.5 ug/mL.
USER NOTE:	Optimal dilutions for each application to be determined by the researcher.
IMMUNOGEN:	Synthetic peptide from human MAGEA4 aa 24-38 (GLVGAQAPTTEEQEA)
HOST SPECIES:	Rabbit

Properties

PURIFICATION:	Protein G Column
PHYSICAL STATE:	Liquid
BUFFER:	PBS, 0.09% sodium azide.
STORAGE CONDITIONS:	MAGEA4 antibody can be stored short term 4 °C. For long term storage aliquot and store at -20 °C. As with all antibodies avoid freeze/thaw cycles.
CLONALITY:	Polyclonal
CONJUGATE:	Unconjugated

Additional Info

ALTERNATE NAMES:	MAGEA4, MAGE-4 antigen, MAGE-41 antigen, MAGE4A, MAGE-41, Melanoma antigen family A, 4, Cancer/testis antigen 1.4, CT1.4, MAGE-X2, MAGE-X2 antigen, MAGE4, MAGE4B, Melanoma-associated antigen 4
ACCESSION NO.:	P43358
PROTEIN GI NO.:	322510046
OFFICIAL SYMBOL:	MAGEA4
GENE ID:	4103

