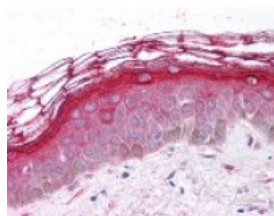




PDGFRA Antibody

CATALOG NUMBER: 49-686



Immunohistochemistry staining of
PDGFRA in skin tissue using PDGFRA
Antibody.

Specifications

SPECIES REACTIVITY:	Human
TESTED APPLICATIONS:	ELISA, IHC
APPLICATIONS:	PDGFRA antibody can be used in ELISA, and immunohistochemistry starting at 5 ug/mL.
USER NOTE:	Optimal dilutions for each application to be determined by the researcher.
IMMUNOGEN:	Amino acids 1063 to 1077 of human PDGFRA
HOST SPECIES:	Rabbit

Properties

PURIFICATION:	Protein G Column
PHYSICAL STATE:	Liquid
BUFFER:	PBS, 0.1% sodium azide.
STORAGE CONDITIONS:	PDGFRA antibody should be stored long term (months) at -20 °C and short term (weeks) at 4 °C. As with all antibodies avoid freeze/thaw cycles.
CLONALITY:	Polyclonal
CONJUGATE:	Unconjugated

Additional Info

ALTERNATE NAMES:	PDGFRA, CD140A, CD140a antigen, PDGFalphaR, PDGFR2, PDGFRalpha, AlphaPDGFR, RHEPDGFRA, PDGF receptor alpha, PDGFR-2, PDGFRA/BCR fusion, APDGFR, Pdgf alpha-receptor, PDGF-R-alpha, PDGFR-alpha
ACCESSION NO.:	P16234
PROTEIN GI NO.:	129892
OFFICIAL SYMBOL:	PDGFRA
GENE ID:	5156

Background

BACKGROUND:

Platelet-derived Growth Factor Receptor Alpha (PDGFR alpha), a member of the a PDGF Receptor tyrosine kinase family, is a mediator of the biological actions of platelet-derived growth factor (PDGF). PDGF binding to PDGF receptors result in stimulation of cell growth, chemotaxis, and cell shape changes. Unlike PDGFR beta, PDGFR alpha can bind to both PDGF subunits. PDGFR alpha has been implicated in the development of spina bifida. In various mouse models, deregulated PDGFR alpha expression was found to result in congenital neural tube defects. In humans, various PDGFRA promoter haplotypes have been associated with neural tube defects.

FOR RESEARCH USE ONLY

December 13, 2016