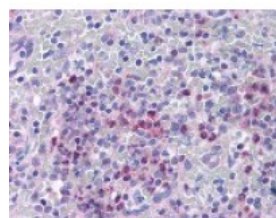




## ITGB1BP1 Antibody

CATALOG NUMBER: 49-680



Immunohistochemistry staining of ITGB1BP1 in spleen tissue using ITGB1BP1 Antibody.

### Specifications

<b>SPECIES REACTIVITY:</b>	Human
<b>TESTED APPLICATIONS:</b>	ELISA, IHC
<b>APPLICATIONS:</b>	ITGB1BP1 antibody can be used in ELISA starting at 1:30000 - 1:90000, Western Blot starting at 1:400 - 1:2000, immunohistochemistry starting at 1:500, and immunofluorescence.
<b>USER NOTE:</b>	Optimal dilutions for each application to be determined by the researcher.
<b>IMMUNOGEN:</b>	Amino acids 92 to 105 of human ITGB1BP1.
<b>HOST SPECIES:</b>	Rabbit

### Properties

<b>PURIFICATION:</b>	Protein G Column
<b>PHYSICAL STATE:</b>	Liquid
<b>BUFFER:</b>	PBS, 0.2% gelatin, 0.02% sodium azide.
<b>STORAGE CONDITIONS:</b>	ITGB1BP1 antibody should be stored long term (months) at -20 °C and short term (weeks) at 4 °C. As with all antibodies avoid freeze/thaw cycles.
<b>CLONALITY:</b>	Polyclonal
<b>CONJUGATE:</b>	Unconjugated

### Additional Info

<b>ALTERNATE NAMES:</b>	ITGB1BP1, ICAP1, ICAP1A, ICAP1B, ICAP-1, ICAP-1alpha, Bodenin, ICAP-1A, ICAP-1B
<b>ACCESSION NO.:</b>	O14713
<b>PROTEIN GI NO.:</b>	17366148
<b>OFFICIAL SYMBOL:</b>	ITGB1BP1
<b>GENE ID:</b>	9270

### Background

FOR RESEARCH USE ONLY

