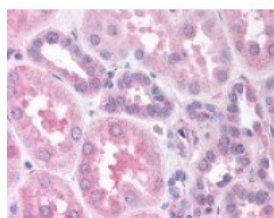




## FBXW4 Antibody

CATALOG NUMBER: 49-668



Immunohistochemistry staining of FBXW4  
in kidney tissue using FBXW4 Antibody.

### Specifications

<b>SPECIES REACTIVITY:</b>	Human
<b>TESTED APPLICATIONS:</b>	ELISA, IHC
<b>APPLICATIONS:</b>	FBXW4 antibody can be used in ELISA starting at 1:2000 - 1:10000, Western Blot starting at 1:200 - 1:1000, immunohistochemistry starting at 20 ug/mL, and immunoprecipitation
<b>USER NOTE:</b>	Optimal dilutions for each application to be determined by the researcher.
<b>IMMUNOGEN:</b>	Amino acids 157 to 171 of human FBXW4 (SHFM3)
<b>HOST SPECIES:</b>	Rabbit

### Properties

<b>PURIFICATION:</b>	Protein G Column
<b>PHYSICAL STATE:</b>	Liquid
<b>BUFFER:</b>	PBS, 0.1% sodium azide.
<b>STORAGE CONDITIONS:</b>	FBXW4 antibody should be stored long term (months) at -20 °C and short term (weeks) at 4 °C. As with all antibodies avoid freeze/thaw cycles.
<b>CLONALITY:</b>	Polyclonal
<b>CONJUGATE:</b>	Unconjugated

### Additional Info

<b>ALTERNATE NAMES:</b>	FBXW4, DAC, Dactylin, FBW4, FBWD4, F-box/WD repeat protein 4, SHFM3, SHSF3
<b>ACCESSION NO.:</b>	P57775
<b>PROTEIN GI NO.:</b>	13124191
<b>OFFICIAL SYMBOL:</b>	FBXW4
<b>GENE ID:</b>	6468

### Background

FOR RESEARCH USE ONLY

