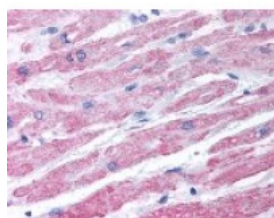




Dysferlin Antibody

CATALOG NUMBER: 49-666



Immunohistochemistry staining of
Dysferlin in heart tissue using Dysferlin
Antibody.

Specifications

SPECIES REACTIVITY:	Human
TESTED APPLICATIONS:	ELISA, IHC
APPLICATIONS:	Dysferlin antibody can be used in ELISA starting at 1:5000 - 1:20000, Western Blot starting at 1:500 - 1:2000, and immunohistochemistry starting at 2.5 ug/mL.
USER NOTE:	Optimal dilutions for each application to be determined by the researcher.
IMMUNOGEN:	Dysferlin antibody was raised against amino acids 2004-2021 of Dysferlin (Human).
HOST SPECIES:	Rabbit

Properties

PURIFICATION:	Protein G Column
PHYSICAL STATE:	Liquid
BUFFER:	PBS, 0.1% sodium azide.
STORAGE CONDITIONS:	Dysferlin antibody should be stored long term (months) at -20 °C and short term (weeks) at 4 °C. As with all antibodies avoid freeze/thaw cycles.
CLONALITY:	Polyclonal
CONJUGATE:	Unconjugated

Additional Info

ALTERNATE NAMES:	DYSF, Dysferlin, Fer-1-like protein 1, FER1L1, LGMD2B, MMD1
ACCESSION NO.:	O75923
PROTEIN GI NO.:	20137708
OFFICIAL SYMBOL:	DYSF
GENE ID:	8291

Background

FOR RESEARCH USE ONLY

