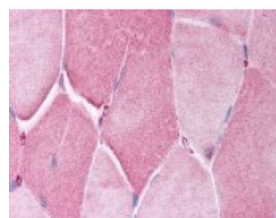




CRY2 Antibody

CATALOG NUMBER: 49-661



Immunohistochemistry staining of CRY2 in skeletal muscle tissue using CRY2 Antibody.

Specifications

SPECIES REACTIVITY:	Human
TESTED APPLICATIONS:	ELISA, IHC
APPLICATIONS:	CRY2 antibody can be used in ELISA starting at 1:10000 - 1:50000, Western Blot starting at 1:5000 - 1:10000, immunohistochemistry starting at 1.25 ug/mL, and immunoprecipitation
USER NOTE:	Optimal dilutions for each application to be determined by the researcher.
IMMUNOGEN:	Amino acids 579-593 of human CYR2
HOST SPECIES:	Rabbit

Properties

PURIFICATION:	Protein G Column
PHYSICAL STATE:	Liquid
BUFFER:	PBS, 0.09% sodium azide.
STORAGE CONDITIONS:	CRY2 antibody should be stored long term (months) at -20 °C and short term (weeks) at 4 °C. As with all antibodies avoid freeze/thaw cycles.
CLONALITY:	Polyclonal
CONJUGATE:	Unconjugated

Additional Info

ALTERNATE NAMES:	CRY2, Cryptochrome-2, KIAA0658, Growth-inhibiting protein 37, Photolyase-like 2, PHLL2, HCRY2
ACCESSION NO.:	Q49AN0
PROTEIN GI NO.:	118572252
OFFICIAL SYMBOL:	CRY2
GENE ID:	1408

Background

FOR RESEARCH USE ONLY

