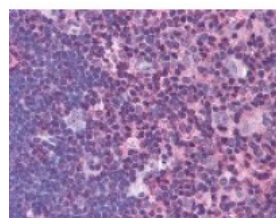




BLM Antibody

CATALOG NUMBER: 49-657



Immunohistochemistry staining of BLM in thymus tissue using BLM Antibody.

Specifications

SPECIES REACTIVITY:	Human
TESTED APPLICATIONS:	ELISA, IHC
APPLICATIONS:	BLM antibody can be used in ELISA starting at 1:5000 - 1:20000, Western Blot starting at 1:500 - 1:2000, immunohistochemistry starting at 5 ug/mL, and immunoprecipitation
USER NOTE:	Optimal dilutions for each application to be determined by the researcher.
IMMUNOGEN:	Amino acids 1319 to 1335 of human BLM
HOST SPECIES:	Rabbit

Properties

PURIFICATION:	Protein G Column
PHYSICAL STATE:	Liquid
BUFFER:	PBS, 0.1% sodium azide.
STORAGE CONDITIONS:	BLM antibody should be stored long term (months) at -20 °C and short term (weeks) at 4 °C. As with all antibodies avoid freeze/thaw cycles.
CLONALITY:	Polyclonal
CONJUGATE:	Unconjugated

Additional Info

ALTERNATE NAMES:	BLM, Bloom syndrome, Bloom syndrome protein, BS, Bloom's syndrome protein, DNA helicase, RecQ-like type 2, RECQ2, RECQL2, RECQL3, RecQ protein-like 3
ACCESSION NO.:	P54132
PROTEIN GI NO.:	1705486
OFFICIAL SYMBOL:	BLM
GENE ID:	641

Background

BACKGROUND:	The Bloom syndrome gene product is related to the RecQ subset of DExH box-containing DNA helicases and
--------------------	--

has both DNA-stimulated ATPase and ATP-dependent DNA helicase activities. Mutations causing Bloom syndrome delete or alter helicase motifs and may disable the 3'-5' helicase activity. The normal protein may act to suppress inappropriate recombination.

FOR RESEARCH USE ONLY

December 13, 2016