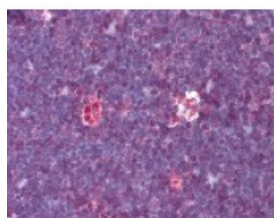




ADA Antibody

CATALOG NUMBER: 49-654



Immunohistochemistry staining of ADA in thymus tissue using ADA Antibody.

Specifications

| | |
|-----------------------------|--|
| SPECIES REACTIVITY: | Human |
| TESTED APPLICATIONS: | ELISA, IHC |
| APPLICATIONS: | ADA antibody can be used in ELISA starting at 1:5000 - 1:25000, Western Blot starting at 1:500 - 1:2500, and immunohistochemistry starting at 2.5 ug/mL. |
| USER NOTE: | Optimal dilutions for each application to be determined by the researcher. |
| IMMUNOGEN: | Amino acids 335 to 353 of human ADA |
| HOST SPECIES: | Rabbit |

Properties

| | |
|----------------------------|---|
| PHYSICAL STATE: | Liquid |
| BUFFER: | PBS, 0.1% sodium azide. |
| STORAGE CONDITIONS: | ADA antibody should be stored long term (months) at -20 °C and short term (weeks) at 4 °C. As with all antibodies avoid freeze/thaw cycles. |
| CLONALITY: | Polyclonal |
| CONJUGATE: | Unconjugated |

Additional Info

| | |
|-------------------------|--|
| ALTERNATE NAMES: | ADA, Adenosine deaminase, ADA1, Adenosine aminohydrolase |
| ACCESSION NO.: | P00813 |
| PROTEIN GI NO.: | 113339 |
| OFFICIAL SYMBOL: | ADA |
| GENE ID: | 100 |

Background

FOR RESEARCH USE ONLY