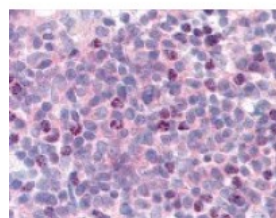




Cyclin L1 Antibody

CATALOG NUMBER: 49-651



Immunohistochemistry staining of Cyclin L1 in thymus tissue using Cyclin L1 Antibody.

Specifications

SPECIES REACTIVITY:	Human
TESTED APPLICATIONS:	ELISA, IHC, IP, WB
APPLICATIONS:	Cyclin L1 antibody can be used in immunohistochemistry starting at 1:100.
USER NOTE:	Optimal dilutions for each application to be determined by the researcher.
IMMUNOGEN:	Cyclin L1 antibody was raised against amino acids 31 - 46 of Cyclin L1 (Human).
HOST SPECIES:	Rabbit

Properties

PURIFICATION:	Protein A Column
PHYSICAL STATE:	Lyophilized
BUFFER:	0.02 M potassium phosphate, 0.15 M sodium chloride, pH 7.2, 0.01% sodium azide
STORAGE CONDITIONS:	Store Cyclin L1 antibody at -20 °C. Aliquot to avoid freeze/thaw cycles.
CLONALITY:	Polyclonal
CONJUGATE:	Unconjugated

Additional Info

ALTERNATE NAMES:	CCNL1, ANIA6A, Ania-6a, BM-001, Cyclin L ania-6a, Cyclin L gamma, Cyclin L1, Cyclin-L, Cyclin-L1, PRO1073
ACCESSION NO.:	Q9UK58
PROTEIN GI NO.:	74753368
OFFICIAL SYMBOL:	CCNL1
GENE ID:	57018

Background

BACKGROUND: Cyclin L (also referred to as CCNL) is encoded by two highly related genes Cyclin L1 and Cyclin L2 (CCNL1 and CCNL2, respectively). Cyclin L has been shown to associate with the PITSRE kinase and is involved in pre-mRNA processing. Both Cyclin L gene products can be alternatively spliced to produce two isoforms (known as

1 and 2 or alpha and beta). Cyclin L2 is ubiquitous, expressed at much higher levels than Cyclin L1, and thus is likely the major partner for the CDK11p110 protein kinase.

FOR RESEARCH USE ONLY

December 13, 2016