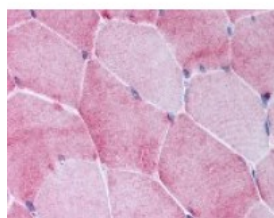




BMP3 Antibody

CATALOG NUMBER: 49-647



Immunohistochemistry staining of BMP3 in skeletal muscle tissue using BMP3 Antibody.

Specifications

SPECIES REACTIVITY:	Human
TESTED APPLICATIONS:	ELISA, IHC
APPLICATIONS:	BMP3 antibody can be used in Western Blot, immunohistochemistry starting at 2.5 mg/ml, and flow cytometry starting at 1/50 - 1/100.
USER NOTE:	Optimal dilutions for each application to be determined by the researcher.
IMMUNOGEN:	BMP3 antibody was raised against amino acids 23-36 of BMP3 (Human).
HOST SPECIES:	Rabbit

Properties

PURIFICATION:	Protein G Column
PHYSICAL STATE:	Liquid
BUFFER:	PBS, 0.09% sodium azide.
STORAGE CONDITIONS:	BMP3 antibody should be stored long term (months) at -20 °C and short term (weeks) at 4 °C. As with all antibodies avoid freeze/thaw cycles.
CLONALITY:	Polyclonal
CONJUGATE:	Unconjugated

Additional Info

ALTERNATE NAMES:	BMP3, BMP-3, BMP-3A, Bone morphogenetic protein 3A, Bone morphogenetic protein 3B, Osteogenin, BMP3A, Bone morphogenetic protein 3, Bone morphogenetic protein-3
ACCESSION NO.:	P12645
PROTEIN GI NO.:	215273985
OFFICIAL SYMBOL:	BMP3
GENE ID:	651

Background

BACKGROUND: BMP3 belongs to the transforming growth factor-beta (TGFB) superfamily. Bone morphogenic protein induces bone formation.

FOR RESEARCH USE ONLY

December 13, 2016