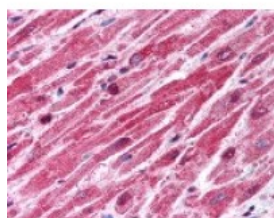




BMP2 Antibody

CATALOG NUMBER: 49-646



Immunohistochemistry staining of BMP2 in heart tissue using BMP2 Antibody.

Specifications

SPECIES REACTIVITY:	Human
TESTED APPLICATIONS:	ELISA, IHC
APPLICATIONS:	BMP2 antibody can be used in ELISA starting at 1:10000 - 1:50000, Western Blot starting at 1:500 - 1:3000, immunohistochemistry starting at 2.5 ug/mL, and immunofluorescence.
USER NOTE:	Optimal dilutions for each application to be determined by the researcher.
IMMUNOGEN:	BMP2 antibody was raised against amino acids 86-102 of BMP2 (Human).
HOST SPECIES:	Rabbit

Properties

PURIFICATION:	Protein G Column
PHYSICAL STATE:	Liquid
BUFFER:	PBS, 0.09% sodium azide.
STORAGE CONDITIONS:	BMP2 antibody should be stored long term (months) at -20 °C and short term (weeks) at 4 °C. As with all antibodies avoid freeze/thaw cycles.
CLONALITY:	Polyclonal
CONJUGATE:	Unconjugated

Additional Info

ALTERNATE NAMES:	BMP2, BDA2, BMP-2, BMP-2A, BMP2A, Bone morphogenetic protein 2, Bone morphogenetic protein 2A
ACCESSION NO.:	P12643
PROTEIN GI NO.:	115068
OFFICIAL SYMBOL:	BMP2
GENE ID:	650

Background

BACKGROUND:	BMP2 belongs to the transforming growth factor-beta (TGFB) superfamily. Bone morphogenic protein induces bone formation. BMP2 is a candidate gene for the autosomal dominant disease of fibrodysplasia (myositis)
--------------------	---

FOR RESEARCH USE ONLY

December 13, 2016