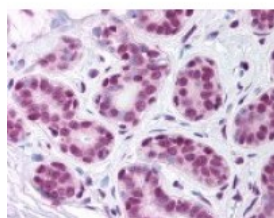




## SUPT16H Antibody

CATALOG NUMBER: 49-621



Immunohistochemistry staining of  
SUPT16H in breast tissue using SUPT16H  
Antibody.

### Specifications

<b>SPECIES REACTIVITY:</b>	Human, Mouse
<b>TESTED APPLICATIONS:</b>	IHC, IP, WB
<b>APPLICATIONS:</b>	SUPT16H antibody can be used in ELISA, Western Blot, immunohistochemistry starting at 5 ug/mL, and immunofluorescence starting at 10 ug/mL.
<b>USER NOTE:</b>	Optimal dilutions for each application to be determined by the researcher.
<b>IMMUNOGEN:</b>	SUPT16H antibody was raised against amino acids 321-640 of SUPT16H (Human).
<b>HOST SPECIES:</b>	Rabbit

### Properties

<b>PURIFICATION:</b>	Purified
<b>PHYSICAL STATE:</b>	Liquid
<b>BUFFER:</b>	PBS, 0.08% sodium azide.
<b>STORAGE CONDITIONS:</b>	Store SUPT16H antibody at -20 °C. Aliquot to avoid freeze/thaw cycles.
<b>CLONALITY:</b>	Polyclonal
<b>CONJUGATE:</b>	Unconjugated

### Additional Info

<b>ALTERNATE NAMES:</b>	SUPT16H, CDC68, FACT140, FACT, FACT complex subunit SPT16, FACT 140 kDa subunit, HSPT16, SPT16/CDC68, FACTP140
<b>ACCESSION NO.:</b>	Q9Y5B9
<b>PROTEIN GI NO.:</b>	74753511
<b>OFFICIAL SYMBOL:</b>	SUPT16H
<b>GENE ID:</b>	11198

### Background

FOR RESEARCH USE ONLY

