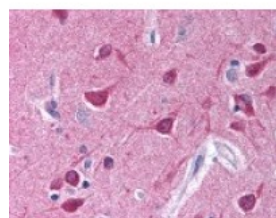


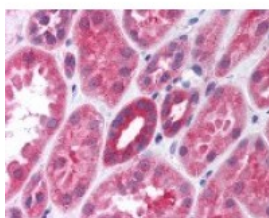


## Gi Alpha Antibody

CATALOG NUMBER: 49-618



Immunohistochemistry staining of in brain cortex tissue using Antibody.



Immunohistochemistry staining of in kidney using Antibody.

### Specifications

<b>SPECIES REACTIVITY:</b>	Bovine, Human, Mouse, Rat
<b>TESTED APPLICATIONS:</b>	IHC, WB
<b>APPLICATIONS:</b>	Gi Alpha antibody can be used in ELISA, Western Blot, immunohistochemistry starting at 5 ug/mL, and immunofluorescence starting at 10 ug/mL.
<b>USER NOTE:</b>	Optimal dilutions for each application to be determined by the researcher.
<b>IMMUNOGEN:</b>	Gi Alpha antibody was raised against amino acids 345-354 of Gi Alpha (Human).
<b>HOST SPECIES:</b>	Rabbit

### Properties

<b>PURIFICATION:</b>	Protein A/G Column
<b>PHYSICAL STATE:</b>	Liquid
<b>BUFFER:</b>	PBS, 0.08% sodium azide.
<b>STORAGE CONDITIONS:</b>	Store Gi Alpha antibody at -20 °C. Aliquot to avoid freeze/thaw cycles.
<b>CLONALITY:</b>	Polyclonal
<b>CONJUGATE:</b>	Unconjugated

### Additional Info

<b>ALTERNATE NAMES:</b>	Adenylate cyclase-inhibiting G alpha proteinGi
<b>ACCESSION NO.:</b>	P63096
<b>PROTEIN GI NO.:</b>	52000964
<b>OFFICIAL SYMBOL:</b>	GNAI1
<b>GENE ID:</b>	2770

### Background

FOR RESEARCH USE ONLY

