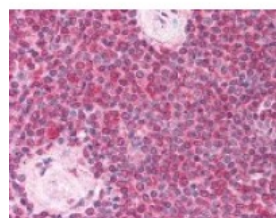




LY86 Antibody

CATALOG NUMBER: 49-615



Immunohistochemistry staining of LY86 in spleen tissue using LY86 Antibody.

Specifications

SPECIES REACTIVITY:	Human, Mouse, Rat
TESTED APPLICATIONS:	IHC, WB
APPLICATIONS:	LY86 antibody can be used in ELISA, and immunohistochemistry starting at 5 ug/mL.
USER NOTE:	Optimal dilutions for each application to be determined by the researcher.
IMMUNOGEN:	LY86 antibody was raised against amino acids 5 - 19 of LY86 (Human).
HOST SPECIES:	Rabbit

Properties

PHYSICAL STATE:	Liquid
BUFFER:	PBS, 0.02% sodium azide.
STORAGE CONDITIONS:	Store LY86 antibody at -20 °C. Aliquot to avoid freeze/thaw cycles.
CLONALITY:	Polyclonal
CONJUGATE:	Unconjugated

Additional Info

ALTERNATE NAMES:	LY86, DJ80N2.1, Ly-86, MD1, MD-1, MD-1, RP105-associated, MMD-1, Protein MD-1, RP1-80N2.1, Lymphocyte antigen 86
ACCESSION NO.:	O95711
PROTEIN GI NO.:	20138465
OFFICIAL SYMBOL:	LY86
GENE ID:	9450

Background

FOR RESEARCH USE ONLY