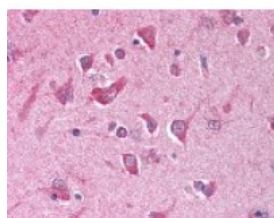




## AP3S2 Antibody

CATALOG NUMBER: 49-596



Immunohistochemistry staining of AP3S2 in brain cortex (formalin-fixed paraffin embedded) tissue using AP3S2 Antibody.



Immunohistochemistry staining of AP3S2 in uterus (formalin-fixed paraffin embedded) using AP3S2 Antibody.

### Specifications

<b>SPECIES REACTIVITY:</b>	Human, Mouse
<b>TESTED APPLICATIONS:</b>	IHC, WB
<b>APPLICATIONS:</b>	AP3S2 antibody can be used in ELISA, Western Blot, and immunohistochemistry starting at 10 ug/mL.
<b>USER NOTE:</b>	This product ships on dry ice.
<b>IMMUNOGEN:</b>	AP3S2 antibody was raised against full length AP3S2 (Human).
<b>HOST SPECIES:</b>	Chicken

### Properties

<b>PURIFICATION:</b>	Immunoaffinity Chromatography
<b>PHYSICAL STATE:</b>	Liquid
<b>BUFFER:</b>	PBS. No preservative added.
<b>STORAGE CONDITIONS:</b>	AP3S2 antibody should be stored at -20 °C. As with all antibodies avoid freeze/thaw cycles.
<b>CLONALITY:</b>	Polyclonal
<b>ISOTYPE:</b>	IgY
<b>CONJUGATE:</b>	Unconjugated

### Additional Info

<b>ALTERNATE NAMES:</b>	AP3S2, AP-3 complex subunit sigma-3B, AP3S3, AP-3 complex subunit sigma-2, Adaptor complex sigma3B, Sigma-adaptin 3b, Sigma3B-adaptin, Sigma-3B-adaptin, Sigma3b
<b>ACCESSION NO.:</b>	P59780
<b>PROTEIN GI NO.:</b>	33112220
<b>OFFICIAL SYMBOL:</b>	AP3S2
<b>GENE ID:</b>	10239

### Background

