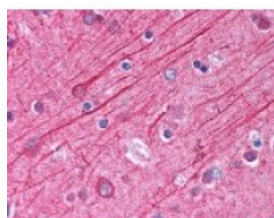




## TUBA1 Antibody

CATALOG NUMBER: 49-595



Immunohistochemistry staining of in brain cortex tissue using Antibody.

### Specifications

<b>SPECIES REACTIVITY:</b>	Bovine, Chicken, Human, Mouse, Rat
<b>TESTED APPLICATIONS:</b>	ELISA, IF, IHC, WB
<b>APPLICATIONS:</b>	TUBA1 antibody can be used in Western Blot starting at 1 - 2 ug/mL, immunohistochemistry starting at 5 ug/mL, and immunofluorescence.
<b>USER NOTE:</b>	Optimal dilutions for each application to be determined by the researcher.
<b>IMMUNOGEN:</b>	TUBA1 antibody was raised against amino acids 427-441 of TUBA1 (Human).
<b>HOST SPECIES:</b>	Rabbit

### Properties

<b>PURIFICATION:</b>	Immunoaffinity Chromatography
<b>PHYSICAL STATE:</b>	Liquid
<b>BUFFER:</b>	0.02 M potassium phosphate, 0.15 M sodium chloride, pH 7.2, 0.01% sodium azide.
<b>STORAGE CONDITIONS:</b>	Store TUBA1 antibody at 4 °C or -20 °C. As with all antibodies avoid freeze/thaw cycles.
<b>CLONALITY:</b>	Polyclonal
<b>CONJUGATE:</b>	Unconjugated

### Additional Info

<b>ALTERNATE NAMES:</b>	TUBA3, Tubulin alpha-1A chain, Alpha-tubulin 3LIS3, B-ALPHA-1
<b>ACCESSION NO.:</b>	Q71U36
<b>PROTEIN GI NO.:</b>	55977864
<b>OFFICIAL SYMBOL:</b>	TUBA1A
<b>GENE ID:</b>	7846

### Background

**BACKGROUND:** Microtubules are involved in a wide variety of cellular activities ranging from mitosis and transport events to cell movement and the maintenance of cell shape. Tubulin itself is a globular protein consisting of two polypeptides (alpha and beta tubulin). Alpha and beta tubulin dimers are assembled to 13 protofilaments that form a

microtubule of 22-nm diameter. Tyrosine ligase adds a C-terminal tyrosine to monomeric alpha tubulin. Assembled microtubules can again be detyrosinated by a cytoskeleton-associated carboxypeptidase. Detyrosinated alpha tubulin is referred to as Glu-tubulin. Another post-translational modification of detyrosinated alpha tubulin is C-terminal polyglutamylation, which is characteristic of microtubules in neuronal cells and the mitotic spindle. This antibody makes an excellent loading control.

---

**FOR RESEARCH USE ONLY**

December 13, 2016