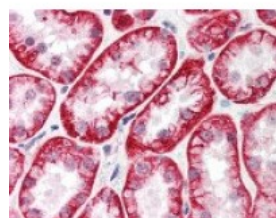




## WRNIP1 Antibody

CATALOG NUMBER: 49-500



Immunohistochemistry staining of  
WRNIP1 in kidney tissue using WRNIP1  
Antibody.

### Specifications

<b>SPECIES REACTIVITY:</b>	Human, Monkey, Mouse, Rat
<b>TESTED APPLICATIONS:</b>	ELISA, IHC, WB
<b>APPLICATIONS:</b>	WRNimmunoprecipitation1 antibody can be used in ELISA, and immunohistochemistry starting at 1:500.
<b>USER NOTE:</b>	Optimal dilutions for each application to be determined by the researcher.
<b>IMMUNOGEN:</b>	WRNIP1 antibody was raised against amino acids 30 - 41 of WRNIP1 (Human).
<b>HOST SPECIES:</b>	Rabbit

### Properties

<b>PURIFICATION:</b>	Immunoaffinity Chromatography
<b>PHYSICAL STATE:</b>	Liquid
<b>BUFFER:</b>	0.02 M potassium phosphate, 0.15 M sodium chloride, pH 7.2, 0.01% sodium azide.
<b>STORAGE CONDITIONS:</b>	Store WRNIP1 antibody at 4 °C or -20 °C. As with all antibodies avoid freeze/thaw cycles.
<b>CLONALITY:</b>	Polyclonal
<b>CONJUGATE:</b>	Unconjugated

### Additional Info

<b>ALTERNATE NAMES:</b>	WRNIP1, Putative helicase RUVBL, WHIP, RP11-420G6.2, ATPase WRNIP1, BA420G6.2
<b>ACCESSION NO.:</b>	Q96S55
<b>PROTEIN GI NO.:</b>	73622085
<b>OFFICIAL SYMBOL:</b>	WRNIP1
<b>GENE ID:</b>	56897

### Background

**BACKGROUND:** Werner's syndrome is a rare autosomal recessive disorder characterized by premature aging. Werner helicase interacting protein 1 (WHIP) interacts with the N-terminal portion of Werner protein, which contains an exonuclease domain. This protein shows homology to replication factor C family proteins, and is conserved from

E. coli to human. Studies in yeast suggest that this gene product may influence the aging process. A second isoform exists (WHIP2).

---

**FOR RESEARCH USE ONLY**

December 13, 2016