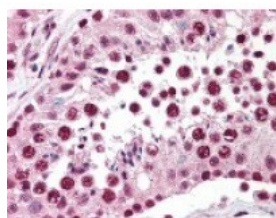




SPANXC Antibody

CATALOG NUMBER: 49-487



Immunohistochemistry staining of SPANXC in testis tissue using SPANXC Antibody.

Specifications

SPECIES REACTIVITY:	Human
TESTED APPLICATIONS:	ELISA, IF, IHC, WB
APPLICATIONS:	SPANXC antibody can be used in Western Blot, and immunohistochemistry starting at 10 ug/mL.
USER NOTE:	Optimal dilutions for each application to be determined by the researcher.
IMMUNOGEN:	SPANXC antibody was raised against amino acids from the C-Terminus of SPANXC (Human) Amino acids 31-47.
HOST SPECIES:	Rabbit

Properties

PURIFICATION:	Immunoaffinity Chromatography
PHYSICAL STATE:	Liquid
BUFFER:	0.02 M potassium phosphate, 0.15 M sodium chloride, pH 7.2, 0.01% sodium azide.
STORAGE CONDITIONS:	Store SPANXC antibody at 4 °C or -20 °C. As with all antibodies avoid freeze/thaw cycles.
CLONALITY:	Polyclonal
CONJUGATE:	Unconjugated

Additional Info

ALTERNATE NAMES:	SPANXC, CTp11, CT11.3, SPANX family member C, SPAN-Xc protein, SPANX family, member C, SPANX-C, Cancer/testis antigen 11.3
ACCESSION NO.:	Q9NY87
PROTEIN GI NO.:	85543354
OFFICIAL SYMBOL:	SPANXC
GENE ID:	64663

Background

BACKGROUND: Human Sperm Proteins Associated with the Nucleus on X-chromosome (SPANX) are relatively low molecular

weight cytoplasmic proteins found in testis and sperm. Their expression in other tissues indicates malignancies.
Family members are observed as proteins that range from 15 to 20 kDa.

FOR RESEARCH USE ONLY

December 13, 2016