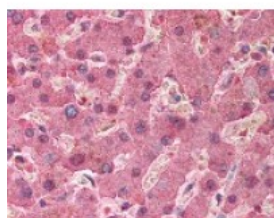




SERPINA1 Antibody

CATALOG NUMBER: 49-484



Immunohistochemistry staining of
SERPINA1 in liver tissue using SERPINA1
Antibody.

Specifications

SPECIES REACTIVITY:	Human
TESTED APPLICATIONS:	ELISA, IF, IHC
APPLICATIONS:	SERPINA1 antibody can be used in ELISA, and immunohistochemistry starting at 20 ug/mL.
USER NOTE:	Optimal dilutions for each application to be determined by the researcher.
IMMUNOGEN:	SERPINA1 antibody was raised against amino acids 951 - 962 of SERPINA1 (Human).
HOST SPECIES:	Rabbit

Properties

PURIFICATION:	Immunoaffinity Chromatography
PHYSICAL STATE:	Liquid
BUFFER:	0.02 M potassium phosphate, 0.15 M sodium chloride, pH 7.2, 0.01% sodium azide.
STORAGE CONDITIONS:	Store SERPINA1 antibody at 4 °C or -20 °C. As with all antibodies avoid freeze/thaw cycles.
CLONALITY:	Polyclonal
CONJUGATE:	Unconjugated

Additional Info

ALTERNATE NAMES:	SERPINA1, A1A, A1AT, AAT, Alpha 1 Antitrypsin, Alpha-1 protease inhibitor, Alpha-1-antiproteinase, Alpha-1-antitrypsin, Alpha1AT, PRO2275, Alpha-1-antitrypsin null, PI1, Serpin A1
ACCESSION NO.:	P01009
PROTEIN GI NO.:	1703025
OFFICIAL SYMBOL:	SERPINA1
GENE ID:	5265

Background

FOR RESEARCH USE ONLY

