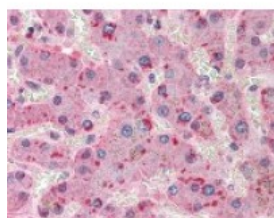




ORM1 Antibody

CATALOG NUMBER: 49-461



Immunohistochemistry staining of ORM1
in liver tissue using ORM1 Antibody.

Specifications

SPECIES REACTIVITY:	Human
TESTED APPLICATIONS:	ELISA, IF, IHC, IP, WB
APPLICATIONS:	ORM1 antibody can be used in ELISA, and immunohistochemistry starting at 10 ug/mL.
USER NOTE:	Optimal dilutions for each application to be determined by the researcher.
IMMUNOGEN:	ORM1 antibody was raised against amino acids from the C-Terminus of ORM1 (Human).
HOST SPECIES:	Rabbit

Properties

PURIFICATION:	IgG Fractionation
PHYSICAL STATE:	Liquid
BUFFER:	0.02 M potassium phosphate, 0.15 M sodium chloride, pH 7.2, 0.01% sodium azide.
STORAGE CONDITIONS:	Store ORM1 antibody at 4 °C or -20 °C. As with all antibodies avoid freeze/thaw cycles.
CLONALITY:	Polyclonal
CONJUGATE:	Unconjugated

Additional Info

ALTERNATE NAMES:	ORM1, AGP-A, Alpha-1-acid glycoprotein 1, AGP 1, AGP1, Alpha-1-acid glycoprotein 2, OMD 1, Orosomucoid, Orosomucoid-1, ORM, Orosomucoid 1
ACCESSION NO.:	P02763
PROTEIN GI NO.:	112877
OFFICIAL SYMBOL:	ORM1
GENE ID:	5004

Background

FOR RESEARCH USE ONLY

