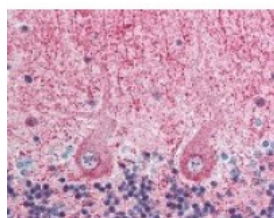




EIF3F Antibody

CATALOG NUMBER: 49-422



Immunohistochemistry staining of EIF3F in cerebellum tissue using EIF3F Antibody.

Specifications

SPECIES REACTIVITY:	Bovine, Chicken, Chimpanzee, Human, Mouse, Rat
TESTED APPLICATIONS:	ELISA, IF, IHC, IP, WB
APPLICATIONS:	ELISA, IF, IHC, IP, WB. EIF3F antibody can be used in ELISA, Western Blot starting at 1:1000, immunohistochemistry starting at 1:500, immunofluorescence, and immunoprecipitation.
USER NOTE:	Optimal dilutions for each application to be determined by the researcher.
IMMUNOGEN:	EIF3F antibody was raised against an internal peptide of EIF3F (Human) 114-125
HOST SPECIES:	Rabbit

Properties

PURIFICATION:	Immunoaffinity Chromatography
PHYSICAL STATE:	Liquid
BUFFER:	0.02 M potassium phosphate, 0.15 M sodium chloride, pH 7.2, 0.01% sodium azide.
STORAGE CONDITIONS:	Store EIF3F antibody at 4 °C or -20 °C. As with all antibodies avoid freeze/thaw cycles.
CLONALITY:	Polyclonal
CONJUGATE:	Unconjugated

Additional Info

ALTERNATE NAMES:	EIF3F, Deubiquitinating enzyme eIF3f, EIF-3-epsilon, EIF3 p47, EIF3S5, EIF3-epsilon, EIF3-p47
ACCESSION NO.:	O00303
PROTEIN GI NO.:	6685511
OFFICIAL SYMBOL:	EIF3F
GENE ID:	8665

Background

BACKGROUND:	eIF3f, also known as eukaryotic translation initiation factor 3 subunit 5, eIF-3 epsilon, and eIF3 p47 subunit, binds to the 40S ribosome and promotes the binding of methionyl-tRNA and mRNA. EIF3f also associates with the complex p170-eIF3. eIF-3 is composed of at least 12 different subunits, eIF3f is one of these subunits.
--------------------	---

